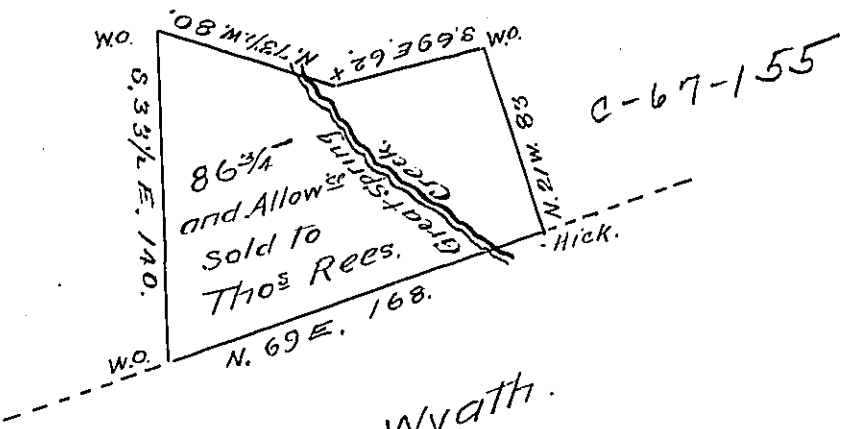


C-67-166



John Wyath.
C-224-82

Surveyed to Thomas Rees 86 3/4 as per on Wt. dated 22^d November 1736 Situate on great Spring Creek in Lancaster County.

IN TESTIMONY that the above is a copy of the original remaining on file in the Department of Internal Affairs of Pennsylvania, made conformably to an Act of Assembly approved the 16th day of February, 1833, I have hereunto set my Hand and caused the Seal of said Department to be affixed at Harrisburg, this twelfth day of September 1906.

Joseph B. Brown
Secretary of Internal Affairs.